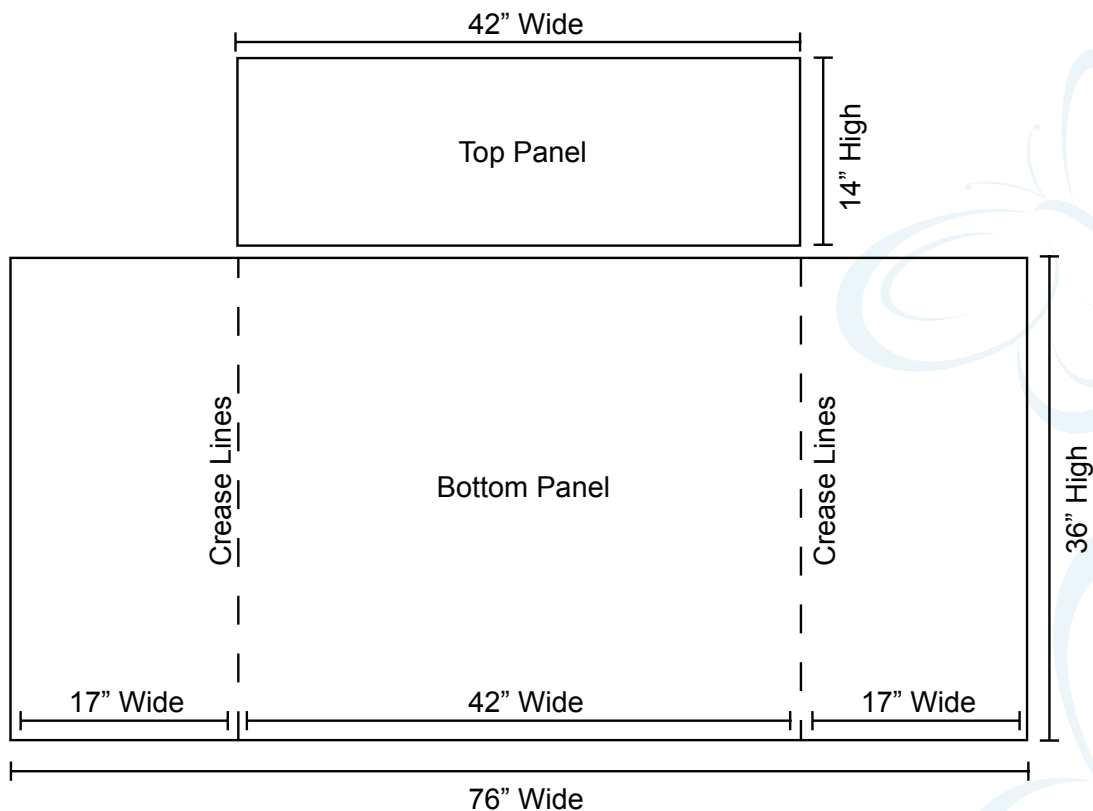


**Please remember:**

- One document. No Tiling. 0.5" Bleed
- For information on file setup, please refer to the File Info and Setup Guide.
- Refer to the diagram below for more details
- Keep in mind that the shaded area below is not visible when laying out text on endcaps.
- If your files are not made to specifications, you may be subject to additional charges. Please ensure all images are made to specifications as outlined in File Info & Setup Guide, and your template below.
- Files may be created at 1/2 or 1/4 scale (as long as 100ppi at full size)
- Sizes are: **Optimal Visual Area - 42" x 36"** and 42" x 14"
- Final Size: **76" x 36" and 42" x 14"**



\*\* Graphics at 100% should be 76" wide. Please add 1" bleed to all files.

Files should be set up as one piece, leave the tiling to us. Files may be created at 1/2 or 1/4 scale.